

TELSTRA ANTENNA CONFIGURATION TABLE

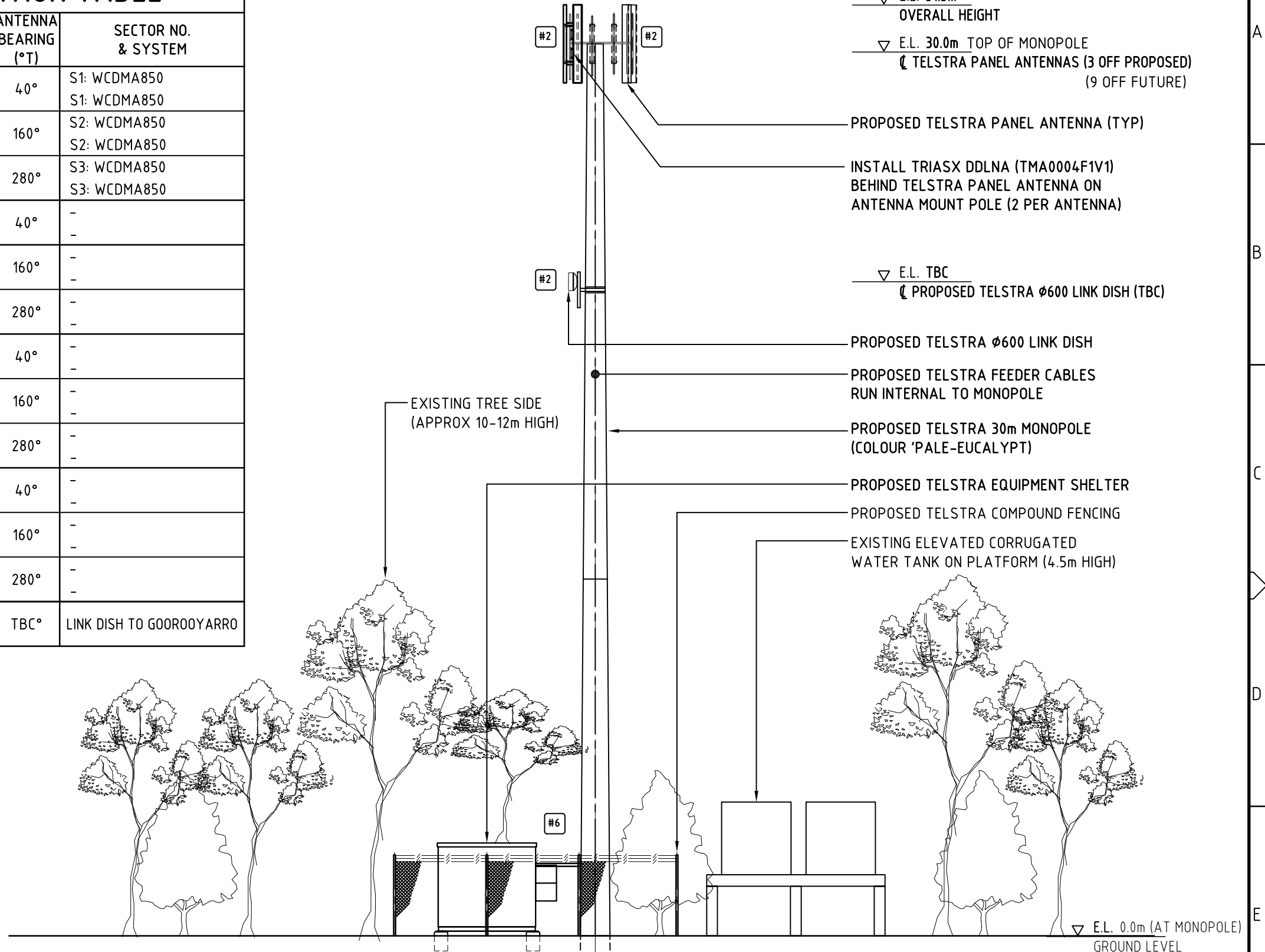
| ANTENNA No | ANTENNA TYPE & SIZE H x W x D | ANTENNA STATUS | ANTENNA HEIGHT C/L A.G.L. | ANTENNA BEARING (°T) | SECTOR NO. & SYSTEM |
|------------|---|----------------|---------------------------|----------------------|------------------------------|
| A1 | ARGUS CPX310R PANEL 2630 x 300 x 115 | PROPOSED | 30.0m | 40° | S1: WCDMA850 S1: WCDMA850 |
| A2 | ARGUS CPX310R PANEL 2630 x 300 x 115 | PROPOSED | 30.0m | 160° | S2: WCDMA850 S2: WCDMA850 |
| A3 | ARGUS CPX310R PANEL 2630 x 300 x 115 | PROPOSED | 30.0m | 280° | S3: WCDMA850 S3: WCDMA850 |
| A4 | ARGUS CPX310R PANEL 2630 x 300 x 115 | FUTURE | 30.0m | 40° | - - |
| A5 | ARGUS CPX310R PANEL 2630 x 300 x 115 | FUTURE | 30.0m | 160° | - - |
| A6 | ARGUS CPX310R PANEL 2630 x 300 x 115 | FUTURE | 30.0m | 280° | - - |
| A7 | ARGUS NPX310R PANEL 1330 x 160 x 95 | FUTURE | 30.0m | 40° | - - |
| A8 | ARGUS NPX310R PANEL 1330 x 160 x 95 | FUTURE | 30.0m | 160° | - - |
| A9 | ARGUS NPX310R PANEL 1330 x 160 x 95 | FUTURE | 30.0m | 280° | - - |
| A10 | ARGUS NPX310R PANEL 1330 x 160 x 95 | FUTURE | 30.0m | 40° | - - |
| A11 | ARGUS NPX310R PANEL 1330 x 160 x 95 | FUTURE | 30.0m | 160° | - - |
| A12 | ARGUS NPX310R PANEL 1330 x 160 x 95 | FUTURE | 30.0m | 280° | - - |
| A25 | φ600 LINK DISH (TYPE TBC) | PROPOSED | TBC | TBC° | LINK DISH TO GOOROOYARRO |

SIGNAGE NOTES:

- #6 EME SIGN SECURED TO MONOPOLE 3m ABOVE GROUND LEVEL. REFER TO 005486 FOR DETAILS.
- #2 EME SIGN SECURED BEHIND ALL ANTENNAS.

NOTES:-

- ALL ACCESS POINTS ON THE STRUCTURE MUST BE BIRD PROOFED AS PER EXTERNAL PLANT POLICY 003615.
- FOR SITE SPECIFIC NOTES REFER TO SHEET S0.
- FOR EME SIGNS REFER TO 005486A10 FOR DETAILS.
- THIS DRAWING SET IS A PRELIMINARY DRAWING ONLY AND IS ISSUED FOR COMMENT. IT IS NOT A DETAILED SURVEY / STRUCTURAL DRAWING AND THEREFORE COULD BE SUBJECT TO CHANGE.
- EQUIPMENT SHELTER, MONOPOLE & ANTENNAS WITH MOUNTS SHALL BE PAINTED WITH COLOUR 'PALE EUCALYPT'.
- MONOPOLE FOOTING TYPE TO BE BASED ON GEO-TECH INVESTIGATION.



SOUTHERN ELEVATION
SCALE 1:150

PRELIMINARY

DO NOT SCALE

1.5m 0 1.5m 3m 4.5m 6m 7.5m SCALE 1:150



Aurecon Australia Pty Ltd ABN 54 005 139 873
116 Military Road (P.O. Box 538) Telephone: +61 2 9465 5599
Neutral Bay Facsimile: +61 2 9465 5598
New South Wales 2089 Australia Email: sydney@ap.aurecongroup.com

A person using Aurecon drawings and other data accepts the risk of:
1. using the drawings and other data in electronic form without requesting and checking them for accuracy against the original hard copy versions;
2. using the drawings or other data for any purpose not agreed to in writing by Aurecon.

| ORDER | DRAWN | CHKD | AMENDMENT | EXAM | APPD | DATE | ISS |
|------------|-------|------|--|------|------|----------|-----|
| NA06329.01 | YL | GJF | PRELIMINARY FOR APPROVAL - 69949559W001TCI | LY | JSP | 24.06.09 | 1 |
| NA06329.01 | AQ | AQ | PRELIMINARY FOR APPROVAL - 70651850W002A | EL | NT | 26.07.10 | 2 |
| NA06329.01 | AQ | AQ | PRELIMINARY FOR APPROVAL - 70651850W002A | PM | NT | 15.04.11 | 3 |

©Telstra Corporation Limited ABN 33 051 775 556 All rights reserved.

Telstra
MOBILE NETWORK SITE 266451
WAMBOIN, DENLEY DRIVE
SITE ELEVATION
OFF DENLEY DRIVE

DWG NO. N108825 SHT NO. S3 INDEX